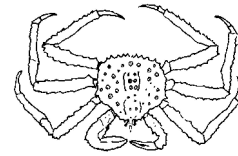


---

**ALASKA DEPARTMENT OF FISH AND GAME**  
**DIVISION OF COMMERCIAL FISHERIES**  
**NEWS RELEASE**



*Denby S. Lloyd, Commissioner*  
*John Hilsinger, Director*



---

Contact:  
Al Tingley

Phone: (907) 465-4243  
Fax: (907) 465-4944

Douglas Area Office  
P.O.Box 110024  
Douglas, AK 99811 - 0024  
Date: June 24, 2008  
Time: 4:15 p.m.

---

**JUNEAU AREA PERSONAL USE RED AND BLUE KING CRAB FISHERY ANNOUNCEMENT**

Juneau. . . The Alaska Department of Fish and Game announced today that the personal use and commercial red and blue king crab fisheries in Section 11-A will be closed for the 2008 season. The decision to close the fisheries is based on the results of the annual red crab stock assessment survey for the Juneau area which was completed on June 10, 2008.

The health of the stock is determined by looking at each component of the stock – males, females, young, and old. The health classification is the determining factor for opening or closing the fisheries. Catch per unit effort (CPUE) data from the annual assessment survey showed adult males at very low levels and young males and all females at or near their lowest levels on record. The low CPUE data for the majority of the stock components results in a health designation of “Poor” and a harvest rate of zero.

The public is reminded that the red/blue personal use king crab fishery in areas outside Section 11-A is closed and will remain closed until the completion the annual red crab stock assessment survey and staff have completed the analysis of the survey results.

The public is also reminded that the golden king crab personal use fishery is open with a daily bag and possession limit of 3 male golden king crab per person in Sections 11-A, 12-B, 15-B, and 15-C. The daily bag and possession limit in the remaining waters of Region 1 east of the longitude of Cape Spencer is six male golden king crab per person. See regulation 5 AAC 77.664 for details.

News releases web site: <http://documents.cfl.adfg.state.ak.us/TopicContents.po>.

<i>Office</i>	<i>Ketchikan</i>	<i>Petersburg</i>	<i>Wrangell</i>	<i>Sitka</i>	<i>Juneau</i>	<i>Haines</i>	<i>Yakutat</i>
<i>ADFG</i>	<i>225-5195</i>	<i>772-3801</i>	<i>874-3822</i>	<i>747-6688</i>	<i>465-4250</i>	<i>766-2830</i>	<i>784-3255</i>
<i>AWT</i>	<i>225-5111</i>	<i>772-3983</i>	<i>874-3215</i>	<i>747-3254</i>	<i>465-4000</i>	<i>766-2533</i>	<i>784-3220</i>